

Shuswap School of Carving and Arts, September 18-24, 2011

Sorrento Retreat And Conference Centre, PO Box 99, 1159 Passchendaele Road, Sorrento, BC V0E 2W0
Phone 250-675-2421 or 1-800-694-2409 - Fax 250-675-3032 -- info@sorrento-centre.bc.ca and <http://sorrento-centre.bc.ca>

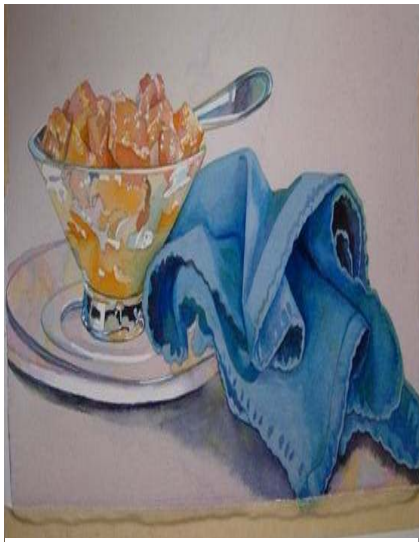
PAINT PORTRAITS IN WATERCOLOUR: \$393 for five 7.5 hours days of instruction

About the Instructor – PATRICIA NEAL LAWTON:

Patricia is a native born BC Painter who lives in Vernon. She has drawn and painted since childhood and had a career as an illustrator in the advertising field for many years in Vancouver, BC. She taught commercial illustration for Emily Carr School of Art & Design and at Okanagan University College. Patricia paints full-time and travels throughout BC exhibiting her work and instructing workshops. She describes her style as “soft illustrative impressionism an illusion of simpler times”. When asked if her class would have a particular focus, she responded, “I teach the basics in drawing and in watercolour and the subjects I prefer are portraits. I teach portraiture of pets, horses, cattle and people. I specialize in casual shots, people doing ordinary things. I love working from my own photographs -- where I work out the composition with my view finder and then improve the comp with a pencil on paper.”



“Girl Friends” by Patricia Lawton



“Breakfast Fruit” by Patricia Lawton

About the Course: The course will include exercises in drawing, contour drawing, shading values (tonal values); mixing pale shadow shades and how to apply them “wet-in-wet” on your drawing. Patricia will demonstrate before each project. She will also cover composition, proportion, angles, negative spaces versus positive spaces, how to find that 3rd dimension in a two-dimensional line drawing, tonal values. She will teach how to paint from still life, photographs, life poses, as well as the option of painting outdoors. She will teach colour mixing from the three primaries, how to find “secondary” and “tertiary” colours and how to mix colourful blacks, as well as the importance of “shock value” colours. She will teach that music helps to distract the left brain to enable our right brains to fully function in an artistic manner. Patricia will demonstrate the large background washes (she normally uses), done in veils of the three primary colours. Other topics include preparing your own (printed) special event greeting cards. Bring a subject to paint for your 2011 Christmas Card.

Skill Level: For watercolour artists with at least a basic experience level.

Tool & Supplies: You will need to bring ... **Brushes:** Nos. 4, 6, 8 and a 1 ½-inch Hake. **Paints:** Winsor & Newton brand *Transparent Cobalt Blue*, *Aureolin Yellow*, *Rose Madder Genuine* and *Permanent Winsor Blue* (red shade) and *Cadmium Red*. **Palette:** By Robert E. Wood (important to have this palette) or 4 small containers to mix colours in for doing large washes. **Paper:** 140 or 300 pound D’Arches watercolour paper; one or two 30 x 22” sheets (Patricia uses 300 pound). **Easel:** Can be Acrylic (buy at a glass store) to tape your paper to - size approximately 15 x 24”; buy a very thin “ply” otherwise it’s too heavy to pack around. **Miscellaneous:** Roll of ½-inch masking tape, Winsor & Newton brand *Art Masking Fluid*; sketch book (50 or 60 pound paper is perfect - don’t buy ‘heavy’ paper); HB pencils; white plastic eraser (Mars is a good make). **These are the supplies Patricia uses. You can also use your present supplies, but it is important to have the 3 transparent colours. Permanent colours don’t work well for scrubbing out or layering over.**



*Closing Ceremonies at Vancouver
(Ryan Getzlaf/Roberto Luongo)
by Patricia Lawton*